



3D Printer User Manual

V1.0

Dear Users:

Thank you for choosing Creality. For your convenience, please read through this User Manual before you started and follow the instructions provided carefully. Creality is always ready to provide you with high-quality services. If you encounter any issues or have any questions when using our products, please use the contact information at the end of this manual. To further improve your user experience, you can find more about our devices via the following methods:

User manual: You can find instructions and videos in the USB drive provided with the printer.

You can also visit our official website (<https://www.creality.com>) to find information regarding software, hardware, contact information, device instructions, device warranty information, and more.

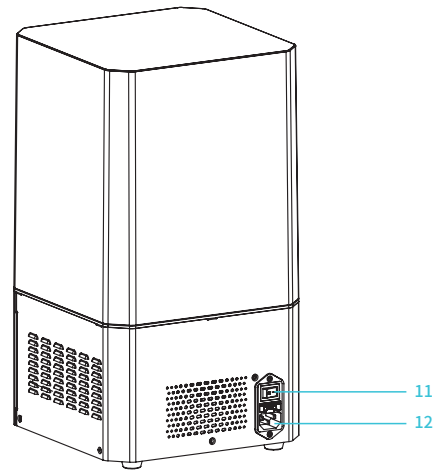
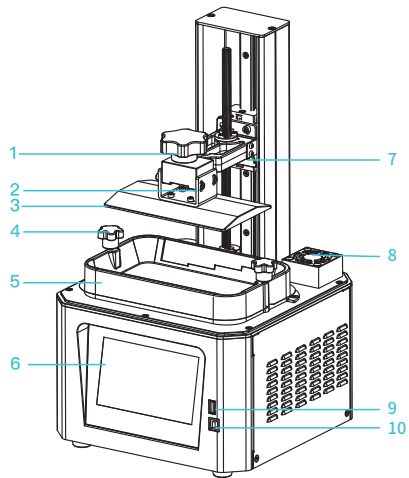
Firmware Upgrade:

Please visit our official website <https://www.creality.com>. Click on Homepage → Support → Download. Download the required firmware and install it to use it with your printer.

- ① Do not use this printer by methods or operations that are not described in this manual, otherwise it may result in accidental injury or property damage.
- ② Do not place this printer near flammable materials, explosive materials or high heat sources. Please place this printer in a ventilated, cool and low-dust environment.
- ③ Do not place this printer in a vibrating or any other unstable environment, as the printing quality will be compromised when the printer shakes.
- ④ Please use the filament recommended by the manufacturer, otherwise the printer may be damaged.
- ⑤ Please use the power cord provided with the printer and do not use the power cord of other products. The power plug must be plugged into a three-hole socket with a ground wire.
- ⑥ Do not open the printer cover while the printer is in operation, otherwise the printing process may be interrupted.
- ⑦ Do not wear cotton gloves while operating the printer, otherwise the moving parts may cause accidental injury including cuts and lacerations.
- ⑧ After the printing is complete, please wear gloves and wait for a while before removing the printing platform. Use tools to remove the model from the platform, and do not touch the platform with your bare hands when cleaning it.
- ⑨ Please regularly clean the printer body with a dry cloth while the power is off, and wipe off dust, sticky printing materials, and foreign objects on the guide rails.
- ⑩ Children under the age of 10 must not use this printer without adult supervision in order to avoid accidental injury.
- ⓘ Warning: Do not plug or unplug the power cable while the printer is turned on.
- Ⓜ Users should abide by the laws and regulations of the corresponding country and region where the equipment is located (place of use), abide by professional ethics, and pay attention to safety obligations. The use of our products or equipment for any illegal purpose is strictly prohibited. Our company is not responsible for the relevant legal responsibilities of any violators.

About the Printer	01-01
Device Specifications	02-02
List of Parts	03-03
Installing the 3D Printer	04-05
Using the 3D Printer	06-10
First Printing	11-13
Remote Controlled Printing	14-14
Circuit Wiring	15-15
Troubleshooting	16-16

1. About the Printer



1 Torx Head Screw

2 Leveling Screw

3 Platform

4 Tray Fixing Screw

5 Tray

6 Touch Screen

7 Limit Sensor

8 Air Filter

9 USB Port

10 Type-B USB Port

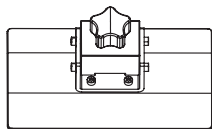
11 Power Switch

12 Power Socket

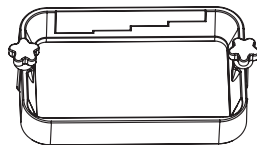
Basic Parameters

Model Name	HALOT-ONE
Build Size	127*80*160mm(length,width and height)
XY Axis Resolution	1620*2560
XY Axis Accuracy	0.05mm
Print speed	1-4S/layer
Layer Thickness	0.01-0.2mm
Touch Screen	5 inch touch screen
Light Source Type	Integral light source (wavelength 405nm)
Rated Voltage	100-240V~, 50/60Hz
Rated Power	100W
Machine Size	221*221*404mm
Package size	295*295*545mm
Net Weight	7.1KG
Gross Weight	8.8KG
Print Method	USB Disk, Creality Cloud
Machine Language	中文(简/繁)/ English/ Español/ Deutsche/ Français/ Русский/ Português/ Italiano/ Türk/Nederlands/Polskie/日本語/한국어
Slicing Software Operation System	Win7/Win8/Win10 64bit, Mac system(32-bit is not supported)
Compatible Resin	Common rigid photosensivie resin, Standard resin, Hight hardness,High toughness, Dental model resin.

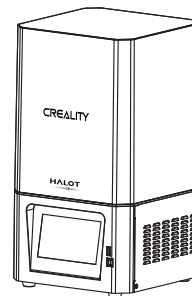
3. List of Parts



1 Printing Platform x 1



2 Tray x 1



3 Printer x 1



List of Tool Kit Items



1 USB Drive x 1



2 2#, 2.5#, 3# Screwdriver x 1



3 Paint Brush x 1



4 Paper Funnel x 4



5 Release Film x 1



6 Metal Blade x 1

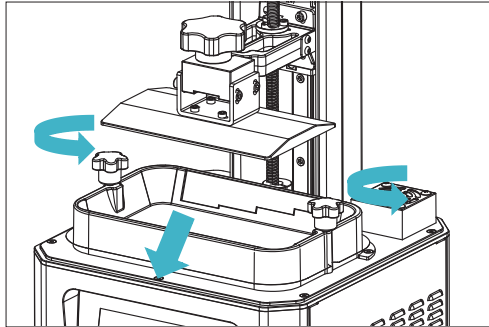


7 Power Cord x 1

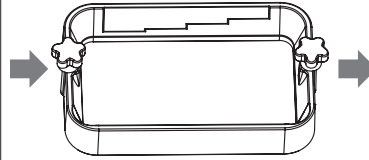
Note: The components above are for reference only. The actual product may vary.

4. Assemble the 3D Printer

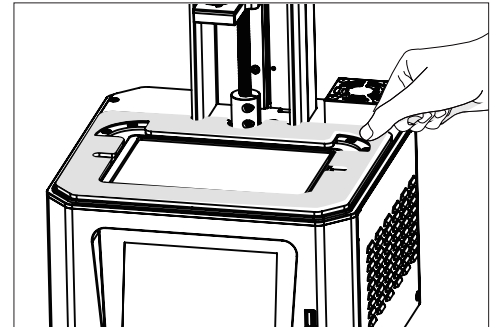
Remove the protective cotton above the printing screen
as shown in the picture:



1. Take out the machine

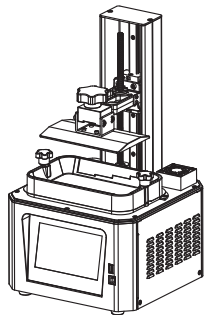


2. Remove the resin vat

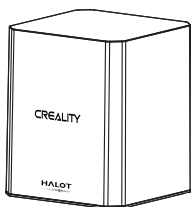


3. Remove the foam above the screen

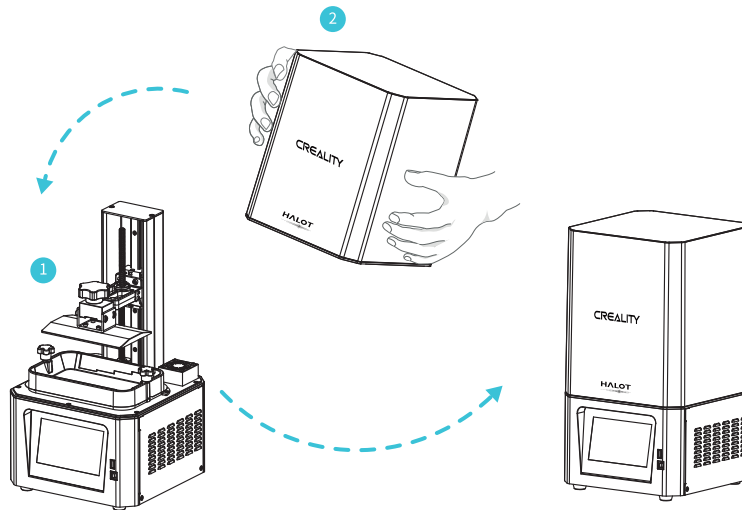
5. Installing the 3D Printer



1 Printer x 1



2 Upper Cover x 1



Note: Embed the upper cover in the mainframe to complete the installation.

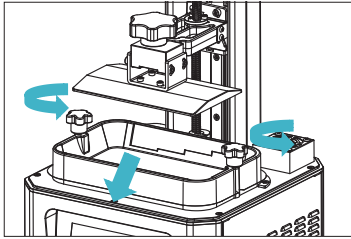
6. Interface Information

Setting

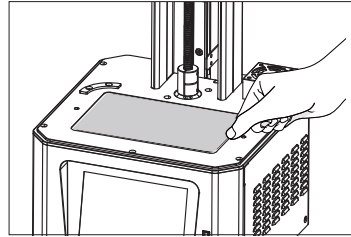
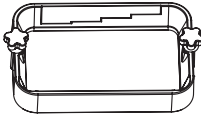


Note: The current interface is for reference only, due to the continuous upgrading of functions, the actual to the official website of the latest firmware UI as the standard.

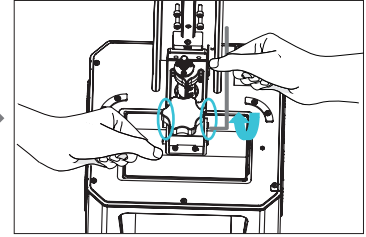
7. Leveling the Platform 1



1. To calibrate the printing platform, first raise the platform, loosen the plastic head screws on the left and right sides of the filament tray, and remove the tray.



2. Loosen the four screws on the connection plate of the modeling platform board and press the A4 paper against the printing screen. Press Settings → Z-axis Movement → Leveling (refer to the 2-step operation for leveling the platform) to check whether the platform fits evenly with the paper.

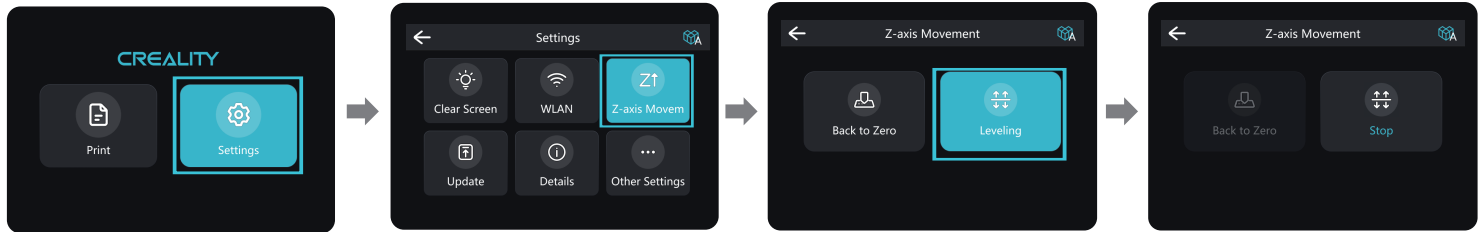


3. After confirming that the A4 paper fits evenly, tighten the four screws on the platform.



Note: The printing platform is already leveled at the factory. If you need to re-level it due to transportation or other reasons, please follow the above-mentioned steps. (The user needs to prepare a piece of flat A4 paper by themselves.)

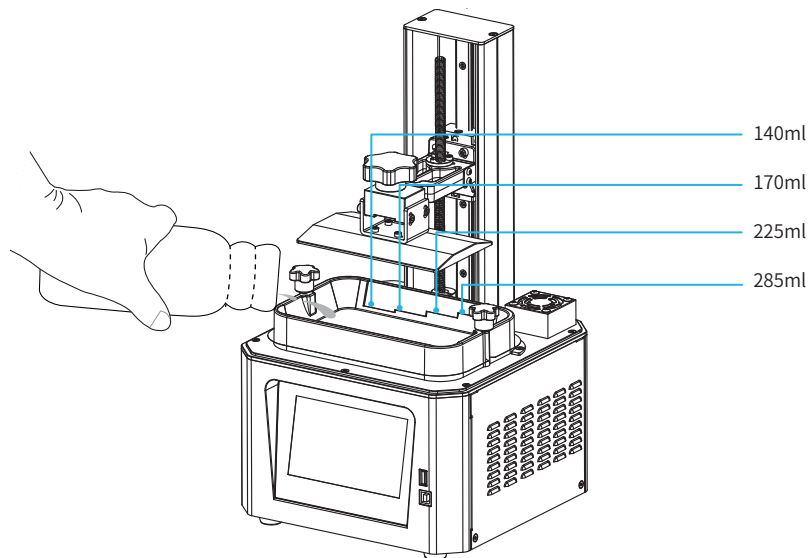
8. Leveling the Platform 2



Note: The current interface is for reference only, due to the continuous upgrading of functions, the actual to the official website of the latest firmware UI as the standard.

9. Loading the Filament

Pour the UV photosensitive resin for the 3D printer into the tray. Container capacity: 140 ml / 170 ml / 225 ml / 285 ml.

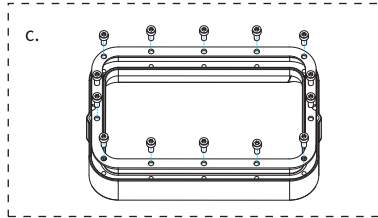
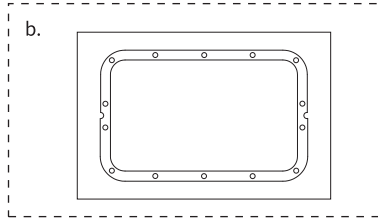
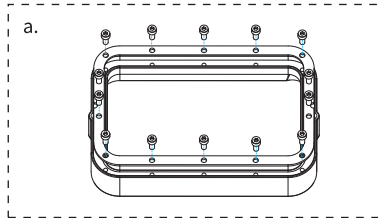


Q&A: How can I replace the filament?
Gently remove the tray and pour the remaining resin into the container. Clean the tray, pour in new resin, and then put the tray back into the printer.



Warning: Please wear gloves before loading the filament, as photosensitive resin is irritating to skin.

10. Replacing the Release Film

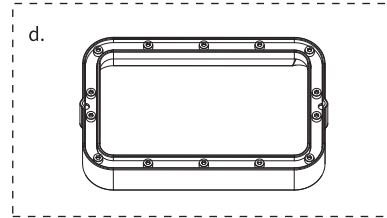


a. Remove the 14 screws at the bottom of the filament tray to remove the worn-out release film.

b. Take. Remove the protective film on both sides of the release film and take a new release film, and then place the new release film between the two steel rings.

c. Put the installed steel rings back into the filament tray and tighten the 14 screws.

d. The installed release film is as shown in the images below.



Parameters Specifications



Dimensions: 140 mm x 200 mm



H

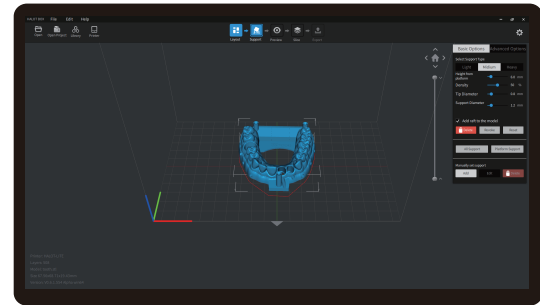
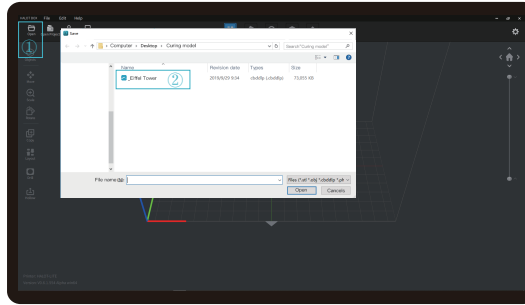
Thickness: 0.15 to 0.2 mm



Light Transmittance: 95%
(Light Transmittance)

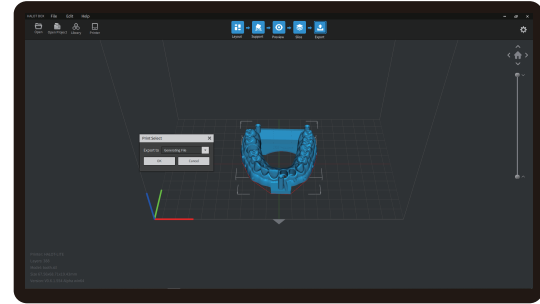
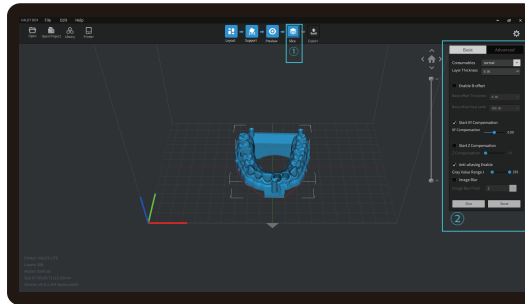
11. First Printing

1. Slicer



1. Open the slicer software of LCD 3D printer, click “open” on the left of the screen and add model file.

2. If the model needs to add support, click the upper left icon to set corresponding parameters.



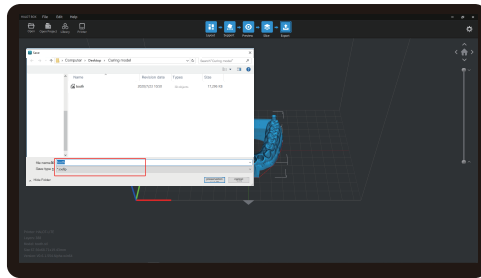
3. Click icon ①→Setting slice printing parameters②→Click “Slice”

4. waiting for slice to be finished→save the sliced file (You are welcome to find more details of slicing tutorial on the official website www.creativity.com).

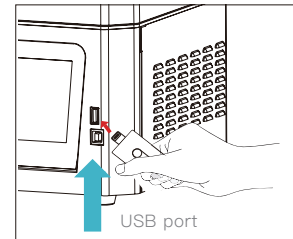


Note: The current interface is for reference only, due to the continuous upgrading of functions, the actual to the official website of the latest firmware UI as the standard.

2. Print



1. Generate cxdlp file, and save the file to U disk;



2. Insert the USB drive → select the file
→ press the Start button.



Note: The current interface is for reference only, due to the continuous upgrading of functions, the actual to the official website of the latest firmware UI as the standard.



Warning: The printer must not be shaken during the printing process, otherwise the printing quality may be compromised.



1. Select files;

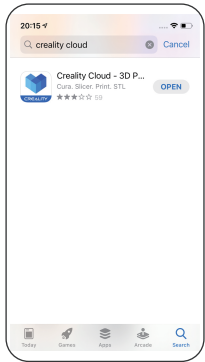
2. Select the file to be printed and press “Start”;

3. Printing...

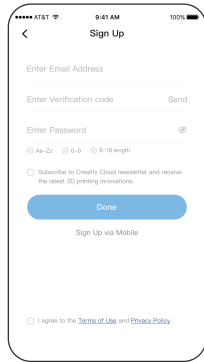


Note: The current interface is for reference only, due to the continuous upgrading of functions, the actual to the official website of the latest firmware UI as the standard.

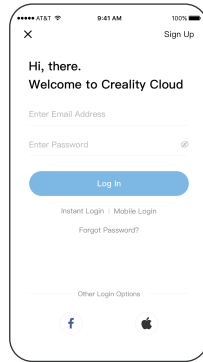
14. Remote Controlled Printing



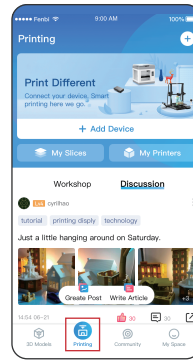
1.Download the app.



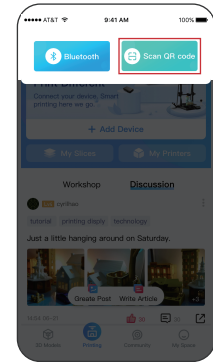
2.Register an account.



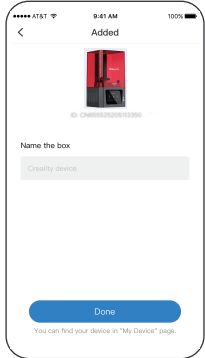
3.Log in to your account.



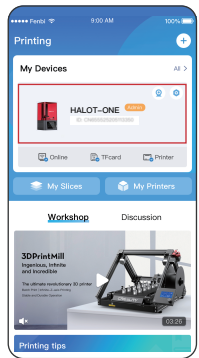
4.Add new devices.



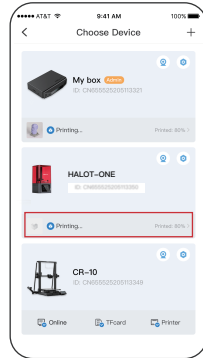
5.Scan the QR code
(Settings → Add Device → QR Code).



6.Name your device.




7.Select your device.



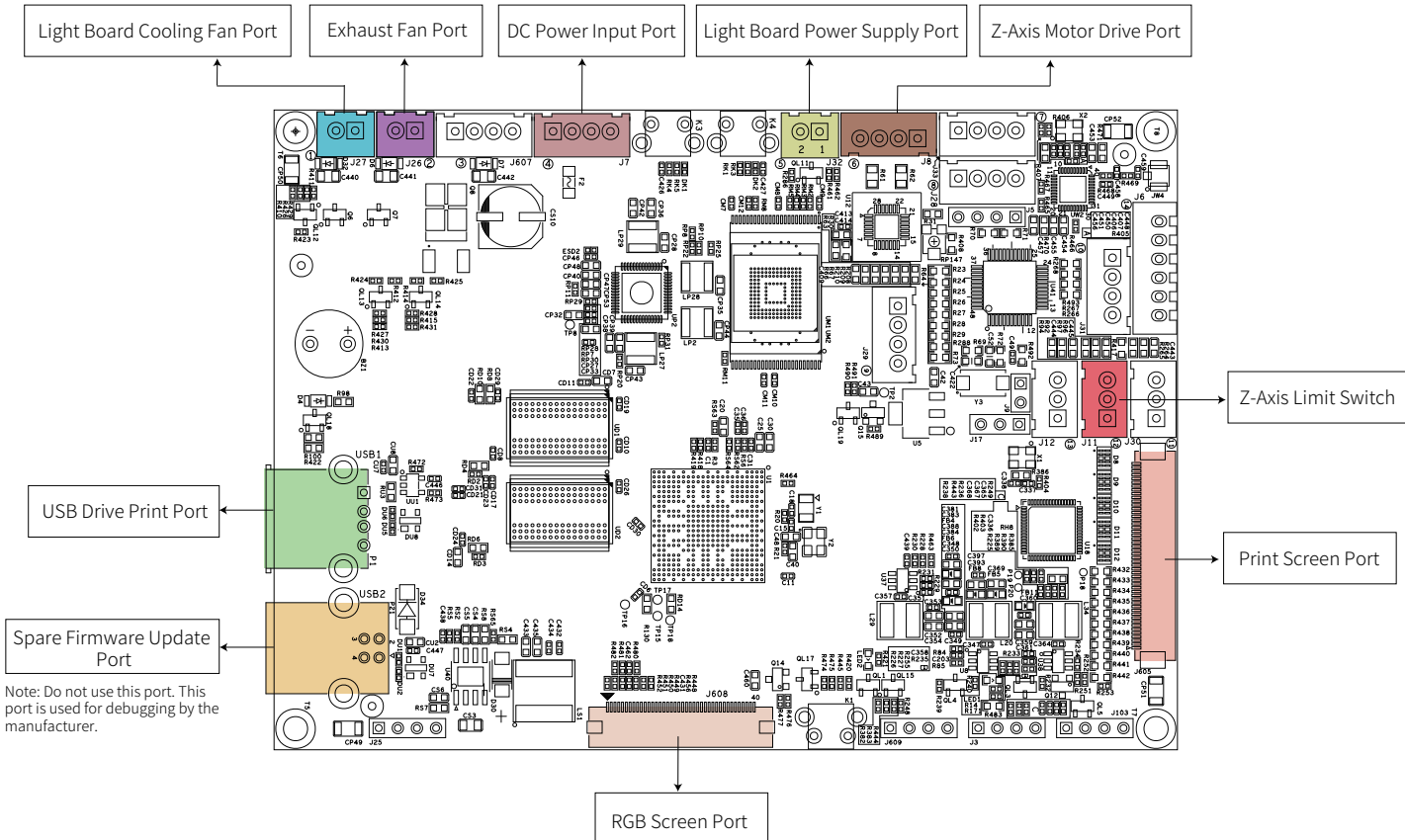
8.Check the printing status.

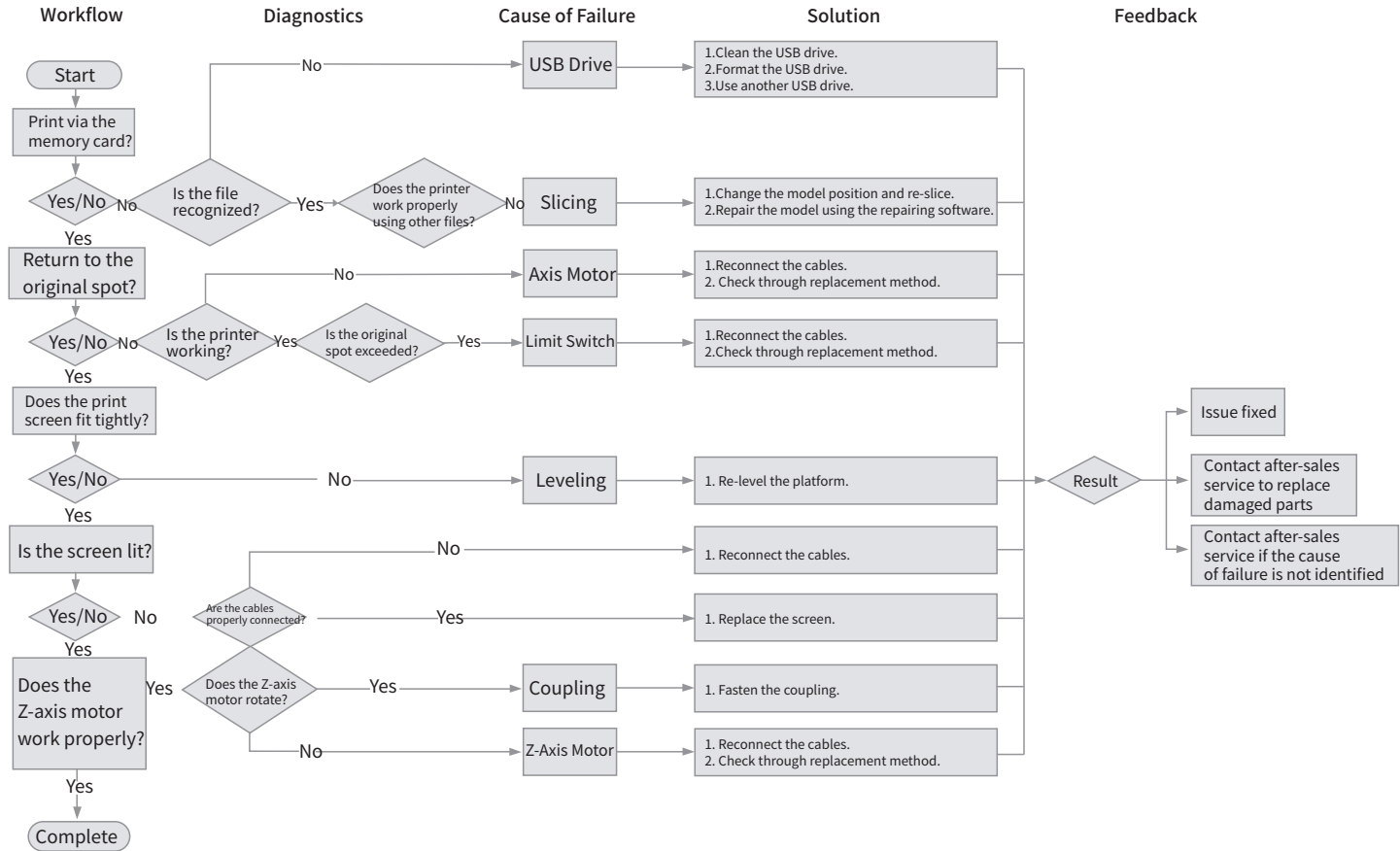


9.Check the printing progress.

 Note: The current interface is for reference only, due to the continuous upgrading of functions, the actual to the official website of the latest firmware UI as the standard.

15. Circuit Wiring





FCC Caution:

Any Changes or modifications not expressly approved by the party responsible for compliance could void the user's authority to operate the equipment.

This device complies with part 15 of the FCC Rules. Operation is subject to the following two conditions: (1) This device may not cause harmful interference, and (2) this device must accept any interference received, including interference that may cause undesired operation.

IMPORTANT NOTE:

Note: This equipment has been tested and found to comply with the limits for a Class B digital device, pursuant to part 15 of the FCC Rules. These limits are designed to provide reasonable protection against harmful interference in a residential installation. This equipment generates, uses and can radiate radio frequency energy and, if not installed and used in accordance with the instructions, may cause harmful interference to radio communications. However, there is no guarantee that interference will not occur in a particular installation. If this equipment does cause harmful interference to radio or television reception, which can be determined by turning the equipment off and on, the user is encouraged to try to correct the interference by one or more of the following measures:

- Reorient or relocate the receiving antenna.
- Increase the separation between the equipment and receiver.
- Connect the equipment into an outlet on a circuit different from that to which the receiver is connected.
- Consult the dealer or an experienced radio/TV technician for help.

FCC Radiation Exposure Statement:

This equipment complies with FCC radiation exposure limits set forth for an uncontrolled environment.

This equipment should be installed and operated with minimum distance 20cm between the radiator& your body.

Since each model is different, the actual product may be different from the picture. Please refer to the actual product.
The final interpretation right belongs to Shenzhen Creality 3D Technology Co., Ltd



SHENZHEN CREALITY 3D TECHNOLOGY CO., LTD.

Add: 18F, JinXiuHongDu Building, Meilong Blvd., Longhua Dist., Shenzhen, China 518131

Official Website: www.creality.com

Tel: +86 755-8523 4565

E-mail: info@creality.com cs@creality.com



R 210-161813

