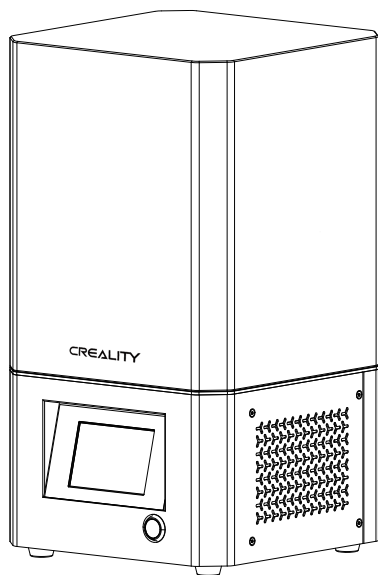


CREALITY

3D Printer User Manual

3D打印机使用说明书

LD-002R



V1.2

Content 目录

Dear Consumers,

Thank you for choosing our products. For the best experience, please read the instructions before operating the Printer. Our teams will always be ready to render you the best services. Please contact us via the phone number or e-mail address provided at the end when you encounter any problem with the Printer.

For a better experience in using our product, you can also learn how to use the Printer in the following ways:

View the accompanied instructions and videos in the U disk.

Visit our official website www.creality.com to find relevant software/hardware information, contact details and operation and maintenance instructions.

尊敬的创想三维用户：

感谢您选择、使用创想三维的产品。为了您使用方便，请您在使用之前仔细阅读该说明书，并严格按照说明书的指示进行操作。

创想三维团队时刻准备为您提供优质的服务。在使用过程中无论遇到什么问题，请按照说明书结尾所提供的电话、邮箱与我们联系。

为了您能够更好地体验我们的产品，您还可以从以下方式获取设备操作知识：

随机使用说明：你可以在U盘内找到相关使用说明及视频。

创想三维官网：www.cxsw3d.com 您可以登陆创想三维官网寻找相关软硬件、联系方式、设备操作、设备保养等信息。

A

Notes

使用须知

B

Assemble the 3D Printer

组装 3D 打印机

C

Use the 3D Printer

使用 3D 打印机

Level the Platform

调平

Load Resin

装料

Release Film Instructions

离型膜包装说明

Start Printing

首次打印

Clean the Resin Vat

料盘清理

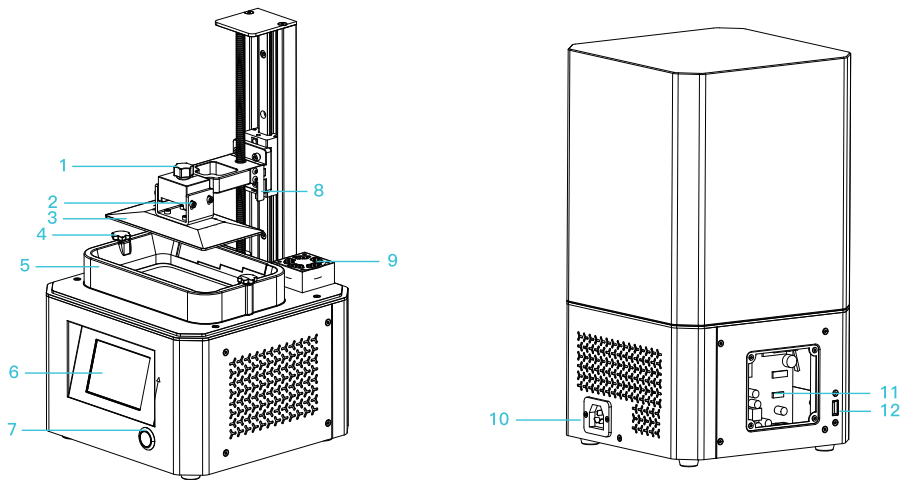
NOTES 使用须知

1. Do not use the printer any way other than described herein in order to avoid personal injury or property damage.
2. Do not place the printer near any heat source or flammable or explosive objects. We suggest placing it in a well-ventilated, low-dust environment.
3. Do not expose the printer to violent vibration or any unstable environment, as this may cause poor print quality.
4. Please use recommended resin to in case damage of machine.
5. Do not use any other power cable except the one supplied. Always use a grounded three-prong power outlet.
6. Please do not open the plastic cover during usage, otherwise the printing will be interrupted.
7. Do not wear cotton gloves when operating the printer. Such cloths may become tangled in the printers moving parts leading to burns, possible bodily injury, or printer damage.
8. Please wait a moment after the print is finished. And please wear gloves to take out the print by tools.
9. Clean the printer frequently. Always turn the power off when cleaning, and wipe with a dry cloth to remove dust, adhered printing plastics or any other material off the frame, guide rails, or wheels. Use glass cleaner or isopropyl alcohol to clean the print surface.
10. Children under 10 years should not use the printer without supervision.

- 1、请勿尝试任何使用说明中没有描述的方法来使用本机，避免造成的意外人身伤害和财产损失；
- 2、请勿将本机放置在易燃易爆物品或高热源附近，请将本机放置在通风、阴凉、少尘的环境内；
- 3、请勿将打印机放置在振动较大或者其他不稳定的环境内，机器晃动会影响打印机打印质量；
- 4、建议使用厂家推荐耗材，以免造成机器损坏；
- 5、请勿在安装过程中使用其他产品电源线代替，请使用本机自带的电源线，电源插头需接插在带有地线的三孔插座；
- 6、请勿在打印机工作时打开打印机面盖，以免影响打印；
- 7、请勿在操作打印机时戴棉手套，以防可动部件对人身部件造成卷入挤压和切割伤害；
- 8、在打印完毕后稍等片刻，戴上手套后再取下打印平台，借助工具将平台上的模型取下，清理时请勿直接用手触摸；
- 9、常做产品维护，定期在断电的情况下，用干布对打印机做机身清洁，拭去灰尘和粘结的打印材料、导轨上的异物；
- 10、年龄在10岁以下的儿童，请勿在没有人员监督的情况下使用本机，以免造成人身伤害。

Equipment Introduction

设备简介



1 Hexalobular socket screw

梅花胶头手拧螺丝

2 Leveling screw

调平螺丝

3 Platform plate

平台板

4 Hexalobular socket screw

梅花胶头手拧螺丝

5 Resin vat

料盘

6 Touch screen

触摸屏

7 Metal power switch

金属电源开关

8 Limit sensor

限位感应片

9 Air filter

空气过滤器

10 Power socket

电源插座

11 5.5-inch screen port

5.5寸屏幕接口

12 USB port

USB接口

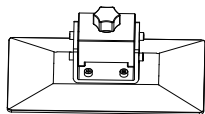
Equipment Parameters

设备参数

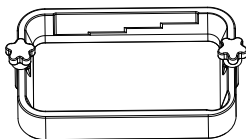
Basic Parameters 基本参数	
Model 型号	LD-002R
Software language 中英切换	English 中文
Print method 打印方式	U disk U盘
X/Y-axis resolution X、Y分辨率	1440*2560 1440*2560
Z-axis precision Z轴精度	0.03mm-0.05mm(layer thickness 即层厚)
Print speed 打印速度	6-18S/ layer height 即层高
Special filaments 专用耗材	Common rigid photosensitive resin, Standard resin, High elasticity, High hardness, High toughness, Dental model resin. 普通刚性光敏树脂、标准树脂、弹性树脂、高硬度、高韧性树脂、牙模树脂
Light source configuration 光源配置	UV integrated lamp bead (wavelength 405nm) 紫外线集成灯珠 (波长405nm)
Operation system 操作系统	Windows XP and above systems Windows XP 以上系统
Nominal power 额定功率	72W
Print size 成型尺寸	119*65*160mm (length, width and height) 119*65*160mm (长*宽*高)
Machine size 设备尺寸	221*221*403mm
Package size 包装尺寸	295*295*545mm
Machine weight 机器重量	7KG
Gross weight 机器毛重	8.7KG
Display screen 显示屏幕	3.5inch 3.5英寸

Package Content

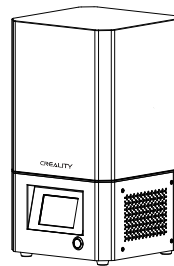
零部件清单



1 Print platform | 打印平台 x 1



2 Resin vat | 料盘 x 1



3 3D printer | 打印机 x 1

Tool list 工具包清单



1 U disk x 1
U盘



2 2#, 2.5#, 3# x 1
Slotted screwdriver
2#、2.5#、3#一字螺丝刀



3 Gloves x 2
手套



4 Brush x 1
油漆刷



5 Plastic blade x 1
塑胶铲刀



6 Paper funnel x 4
纸漏斗



7 Release film x 1
离型膜



8 Mask x 2
口罩



9 Metal blade x 1
金属铲刀

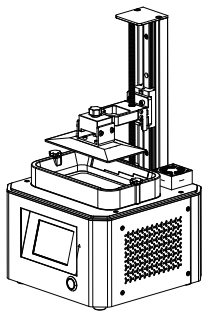


10 Power adapter x 1
电源线

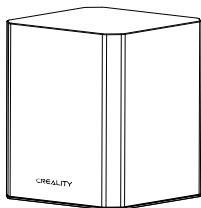
1

Assemble the 3D Printer

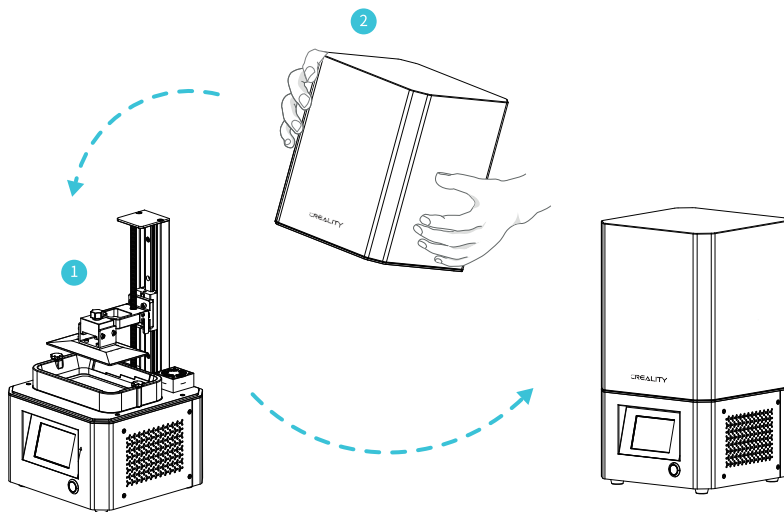
组装3D打印机



1 Machine body | 主机 x 1



2 Plastic cover | 上盖 x 1



Note: Put the plastic cover on the machine body and the installation is completed.

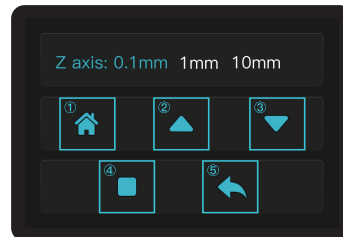
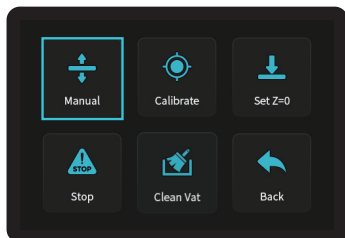
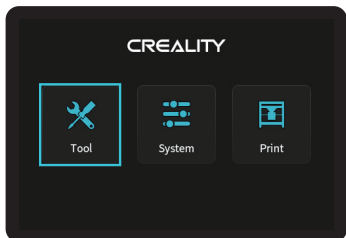
注意：上盖嵌入主机即安装完成。

2

Interface Information

界面信息

Tools



工具

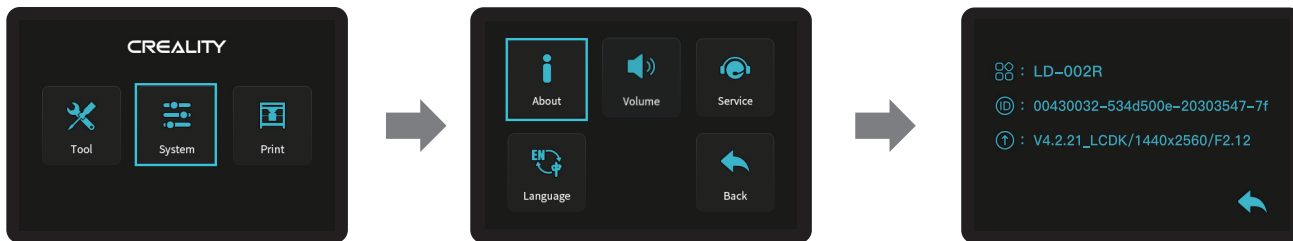


Note: The UI information is only for reference, the actual UI may be different.
注意: 界面仅供参考, 实际以UI为准。

Interface Information

界面信息

System



系统

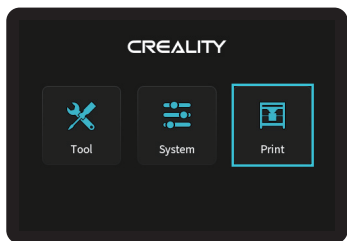


Note: The UI information is only for reference, the actual UI may be different.
注意：界面仅供参考，实际以UI为准。

Interface Information

界面信息

Print



① Turn up ② Turn down ③ Back



① Delete ② Print/stop ③ Back

打印



① 上翻 ② 下翻 ③ 返回



① 删除 ② 打印/停止 ③ 返回

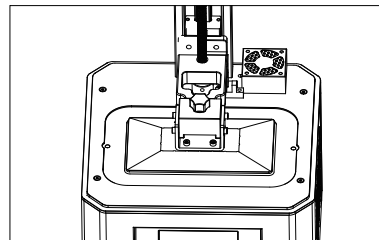
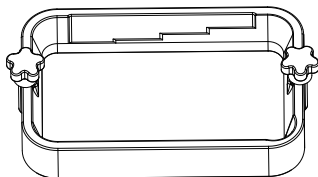
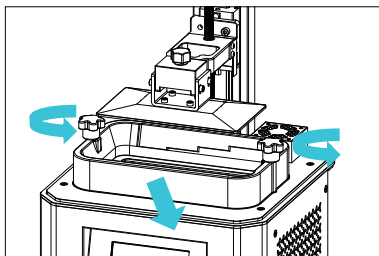


Note: The UI information is only for reference, the actual UI may be different.
注意：界面仅供参考，实际以UI为准。

3

Level Platform 1

调平平台 1



1. First raise the platform, then loosen rubber screws on the left and right sides of the resin vat, and take out the resin vat.

进行打印平台的校准，首先上升平台，拧松料槽左右两侧胶头手拧螺丝，将料槽取出。

2. Tools → Manual → Home, and check whether the platform sticks into the printing screen.

按工具→手动→回原点，检查平台是否贴紧打印屏。



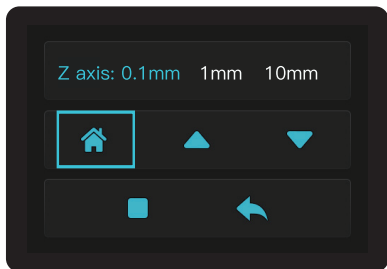
Note: The printing platform has been leveled at the factory. If it needs leveling due to transportation or other reasons, please follow the steps below to adjust the printing platform.

注意：打印平台出厂时已调平，若因运输或其他原因需要调平，可以进行以下步骤进行打印平台调平。

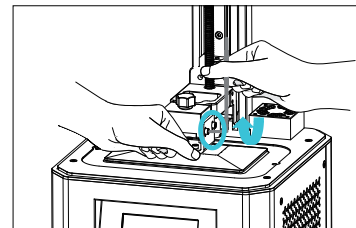
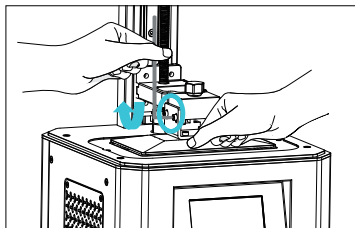
4

Level Platform 2 调平平台 2

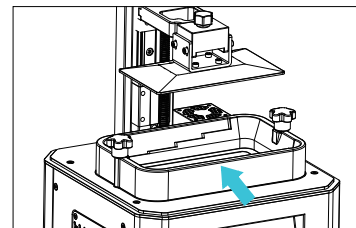
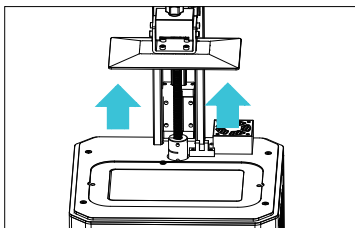
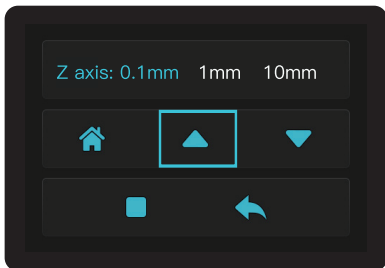
If the platform does not stick to the print screen, do as the following:
如果没有贴紧打印屏, 请进行如下操作:



1. After unscrewing the screw, press "Home" to keep the platform and the print screen parallel.



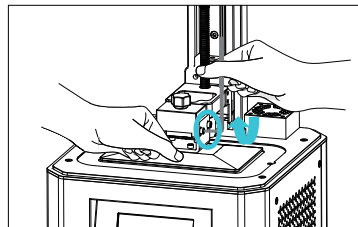
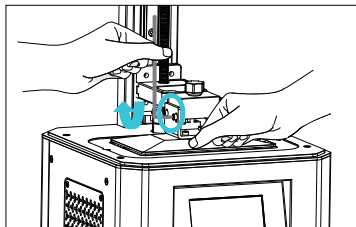
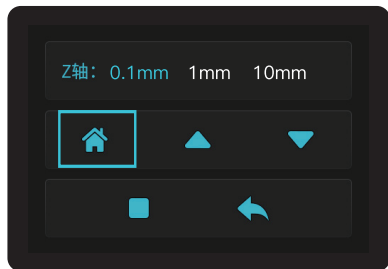
2. Gently press the platform and tighten 4 screws clockwise, and the platform can be leveled successfully.



3. Level up the z-axis to a proper position, put the resin vat in, align the screw holes at both ends of the resin vat, and then tighten the fixing screws at both ends of the resin vat.

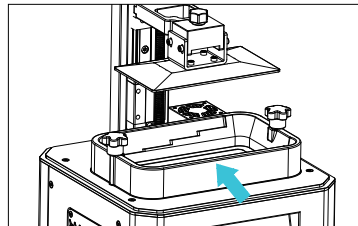
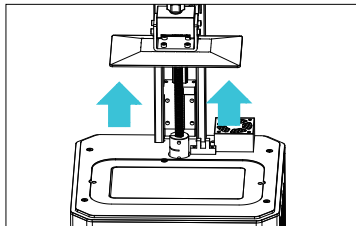
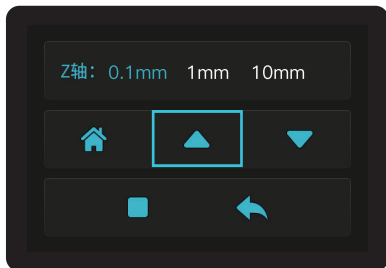
Level Platform 2 调平平台 2

If the platform does not stick to the print screen, do as the following:
如果没有贴紧打印屏, 请进行如下操作:



1. 拧松螺丝后, 按触摸屏“原点”, 保持平台与底板部分平衡。

2. 轻轻压平台两端, 顺时针拧紧4个平台螺丝, 即平台调平成功。

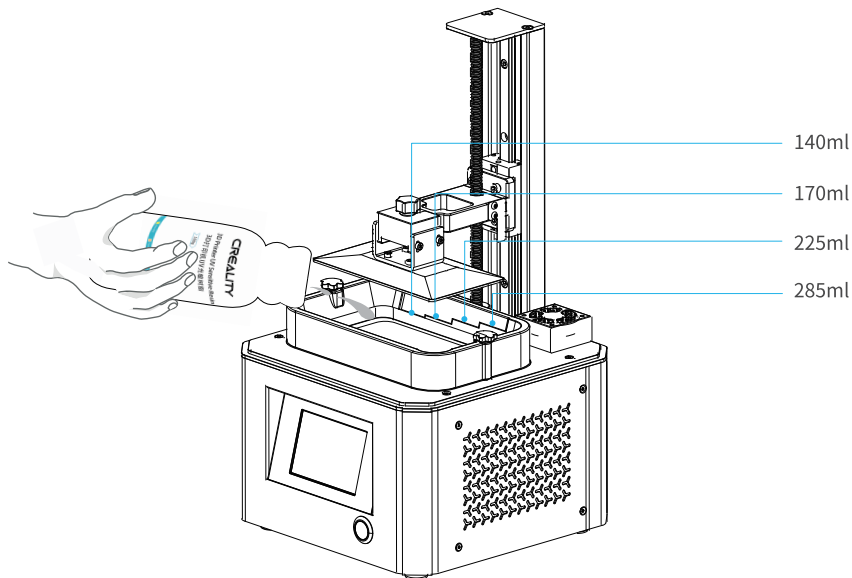


3. 控制Z轴上移, 至合适位置, 放入料盘, 对准料盘两端螺孔后, 旋紧两端的料盘固定螺丝。

5

Load Resin 装料

Pour the UV photosensitive resin into the resin vat. The slot capacity is 140ml / 170ml / 225ml / 285ml.
将3D打印机 UV 光敏树脂倒入料盘,槽位容量分别:140ml/170ml/225ml/285ml。



Tips: How to change resin:

Take out the resin vat slowly, pour out the remaining resin into the container, clean the resin vat, pour in new resin, and then install the resin vat to the machine.

提示: 如何更换耗材?

将料盘缓缓取出,把剩余树脂倒入容器,清洗干净料盘,重新倒入新树脂,再把料盘安装到机器即可。



Caution : Resin may cause skin irritation or an allergic skin reaction. Please wear gloves before use to avoid direct contact with the skin.

警示: 请戴上手套方可进行装料,光敏树脂为刺激性材料,避免接触到皮肤。

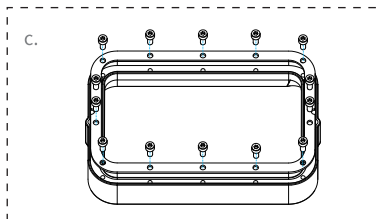
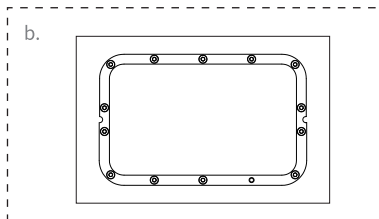
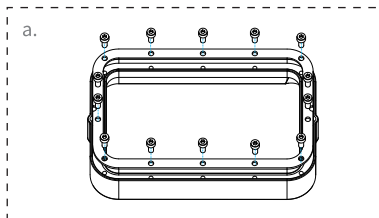
6

Release Film Instructions

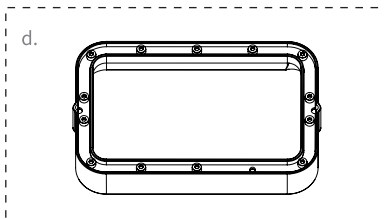
离型膜包装说明

Installation steps

安装步骤



- a. First, remove the 14 screws at the bottom of the tray and take out the broken release film.
首先拆卸料槽底部的14颗螺丝,取出坏的离型膜
- b. Then place the release film between the two steel frames.
然后将离型膜放置在两个钢圈之间
- c. Finally, put the assembled steel frame back into the tray and tighten 14 screws.
最后将安装完的钢圈放回料槽,锁上14颗螺丝
- d. The installed release film is as shown.
安装好的离型膜如下图

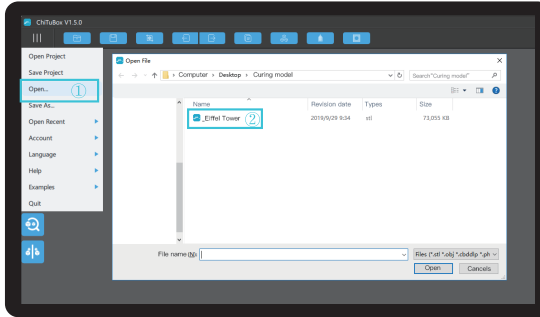
Parameters
规格参数尺寸:140mm*200mm
(Size)厚度:0.15-0.2mm
(Thickness)透光率:95%
(Light Transmittance)

7

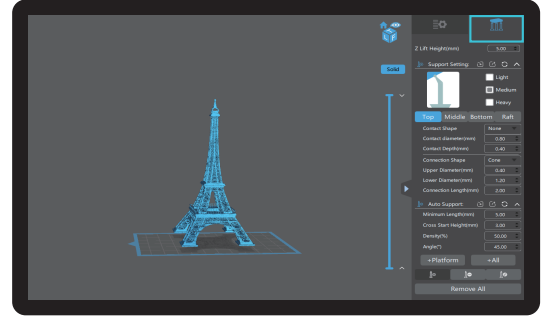
Start Printing

首次打印

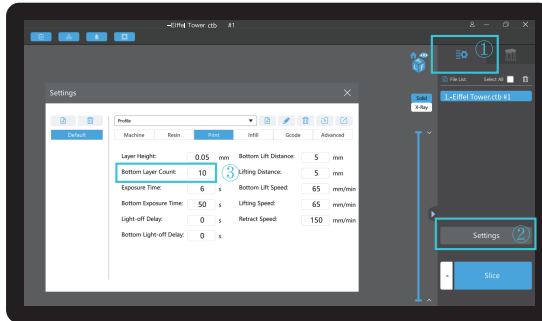
1. Slice



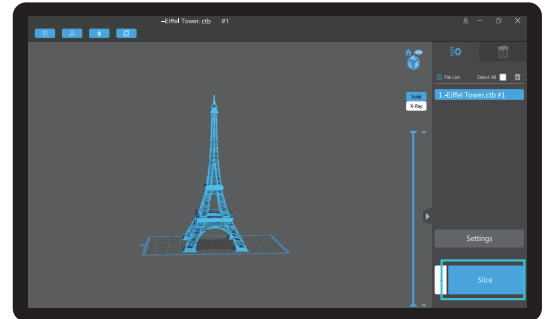
1. Open the slice software of LCD 3D printer, click “open” on the left of the screen and add model file.



2. If the model needs to add support, click the upper right icon to set corresponding parameters.



3. Click icon ①→click ②“Setting”→setting slice parameters (recommend to set parameters of bottom layer as 10-20).

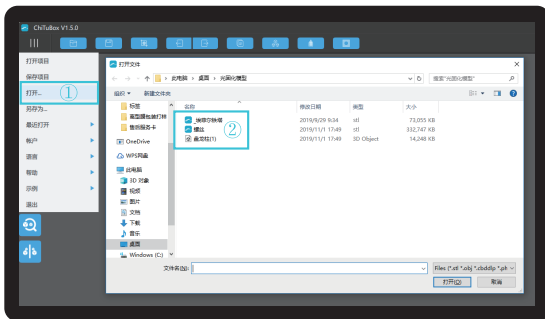


4. Click “Slice”→waiting for slice to be finished→save the sliced file (You are welcome to find more details of slicing tutorial on the official website www.creality.com).

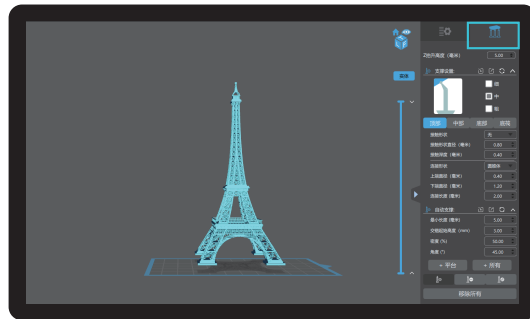
Start Printing

首次打印

1. 切片



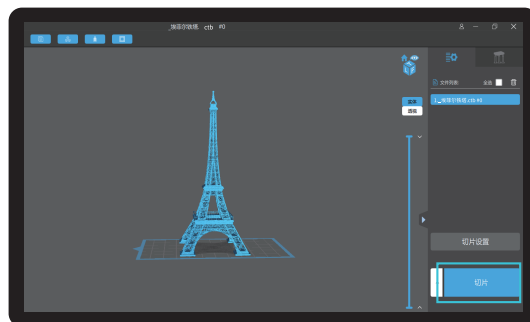
1. 打开LCD固化3d打印切片软件,界面左方点击“打开”添加模型文件;



2. 根据模型如需添加支架, 点击右上方图标, 设置相应参数;



3. 点击图标①→点开切片设置②→设置切片参数(底层数量建议设置10-20);

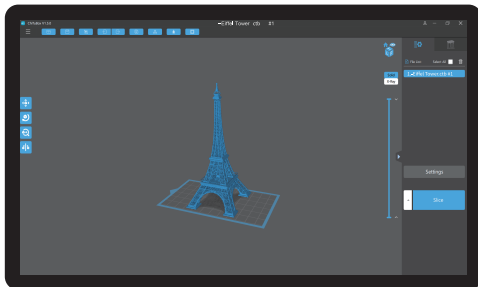


4. 点击切片→等待完成切片后→另存切片好的文件。
(*切片教程详见官网切片视频www.cxsw3d.com)

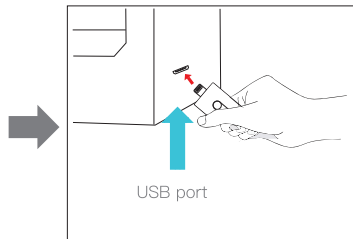
Start Printing

首次打印

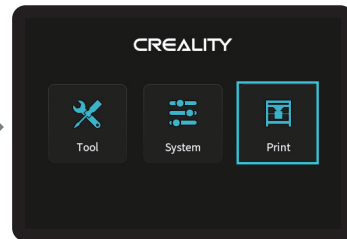
2. Print



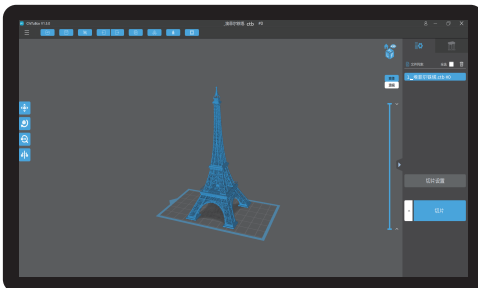
1. Generate G-code, and save the gcode file to U disk.



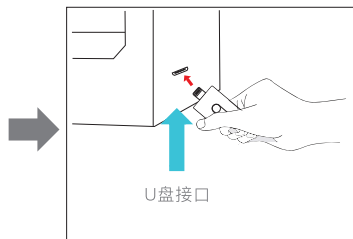
2. Insert the U disk → press the print button.



2. 打印



1. 生成 G 代码 → 保存文件到 U 盘



2. 插入 U 盘 → 按下打印按键

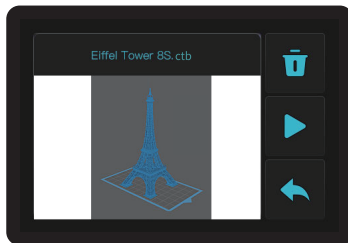


Start Printing

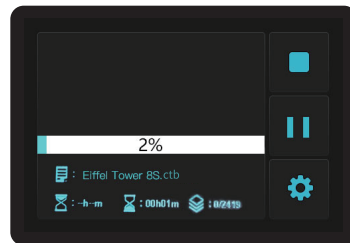
首次打印



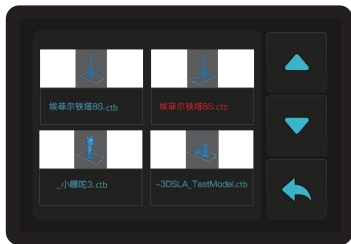
3. Press "up" or "down" to select files.



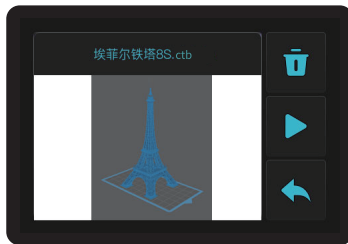
4. Select the file to be printed and press "print".



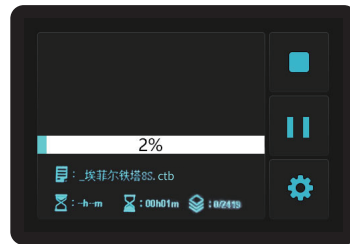
5. Printing.



3. 上下翻可选择文件



4. 选中需要打印的文件,按下打印键

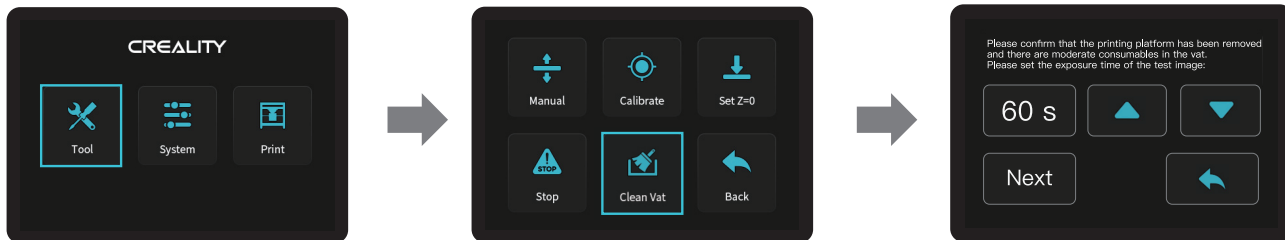


5. 正在打印中

8

Clean the Resin Vat

料盘清理



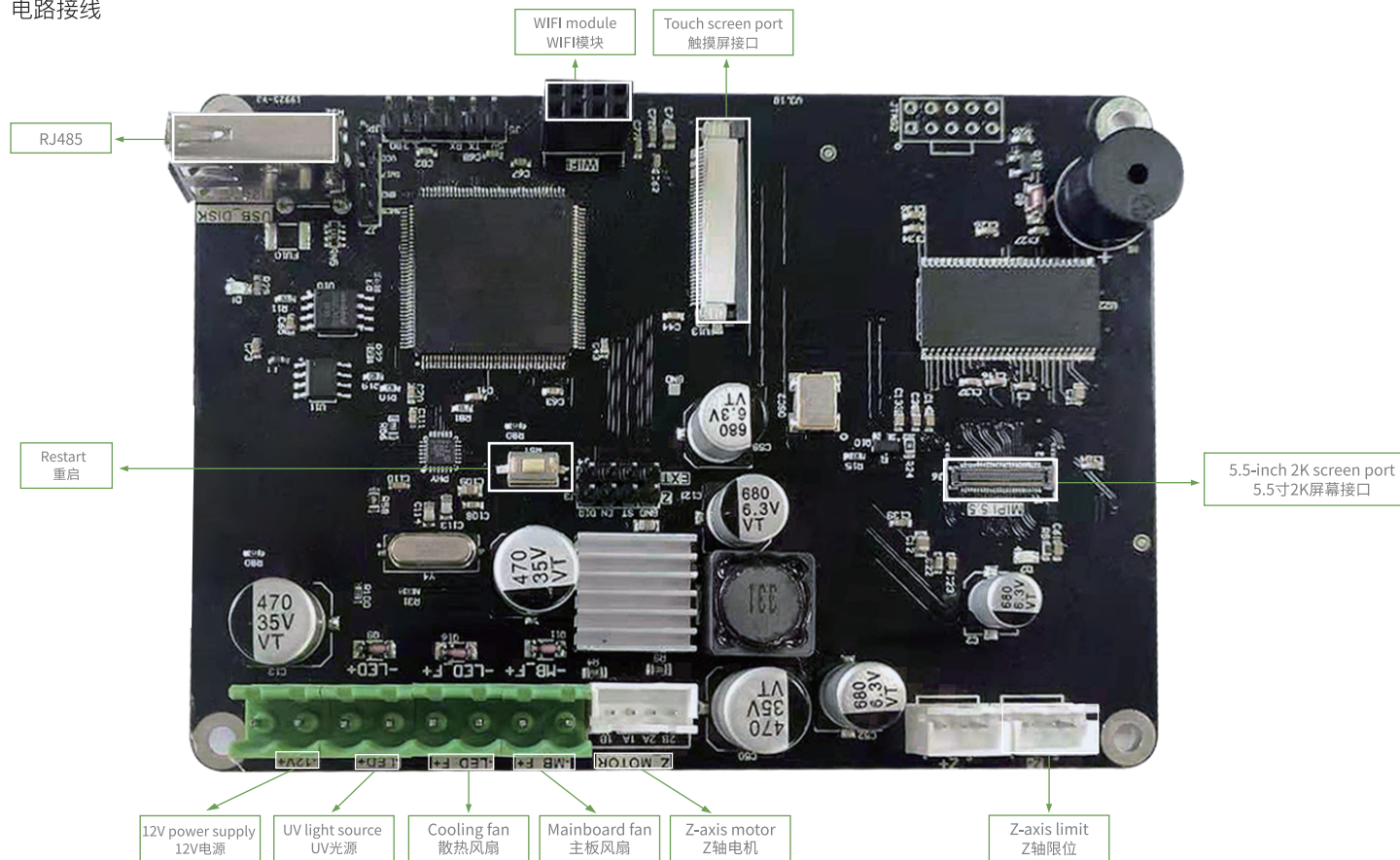
*If there is residue in resin vat before printing, please clean resin vat first. The cleaning time is generally set to 60 seconds and then shovel it off with a plastic blade.



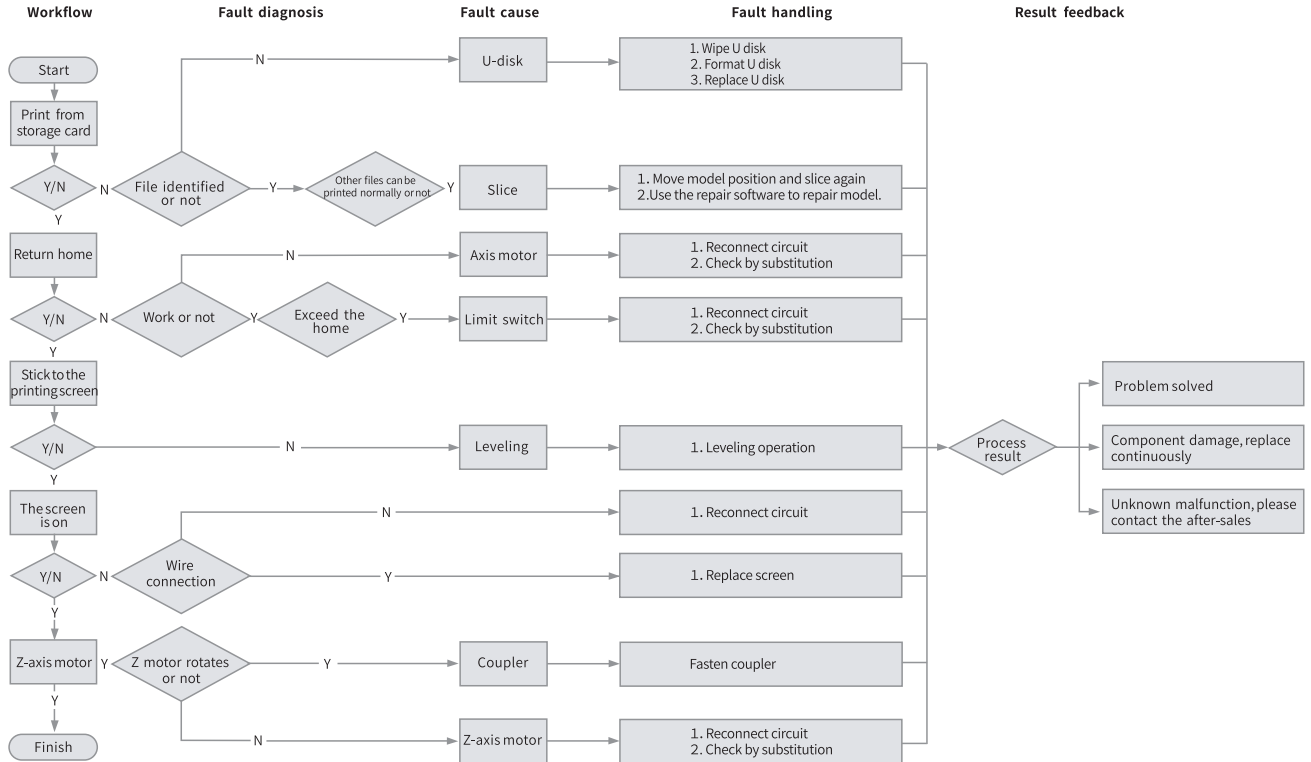
*如打印前料盘有残渣，请先清理料盘，一般设置清理时间为60s,再用塑胶铲刀铲掉。

Wiring Connection

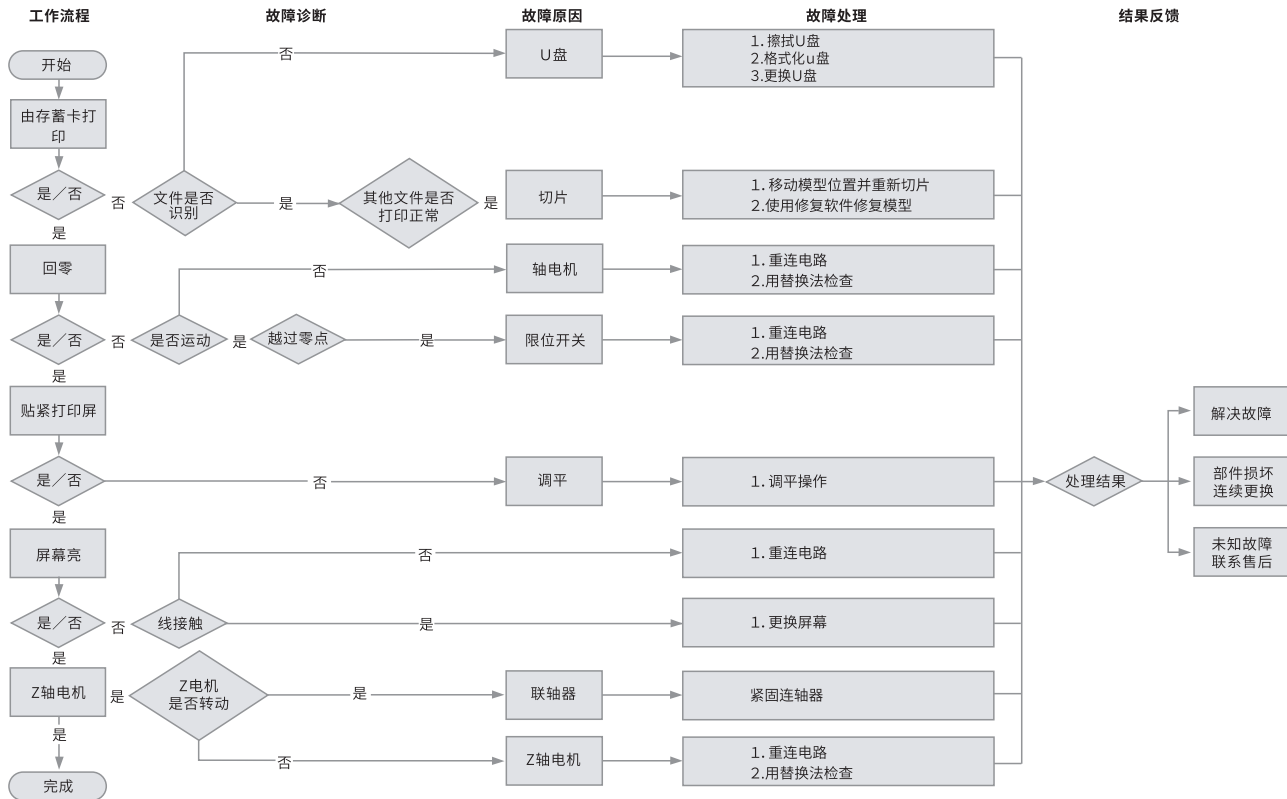
电路接线



Troubleshooting



故障检修



Due to the differences between different machine models, the physical objects and the final images can differ. The final explanation rights shall be reserved by Shenzhen Creality 3D Technology Co., Ltd.

因每款机型不同,实物与图可能有所差异, 请以实物为准, 最终解释归深圳市创想三维科技有限公司所有。



SHENZHEN CREALITY 3D TECHNOLOGY CO.,LTD.

11F & Room 1201,Block 3,,JinChengYuan,Tongsheng Community,

Dalang,Longhua District,Shenzhen,China,518109

Official Website: www.creality.com

Tel: +86 755-8523 4565

E-mail: info@creality.com cs@creality.com



深圳市创想三维科技有限公司

深圳市龙华区大浪街道同胜社区金城工业园第三栋1201、11层

公司网站: www.cxsw3d.com

服务热线: 400 6133 882

0755-8523 4565

