

## Model: SCT013-050

### Characteristic:

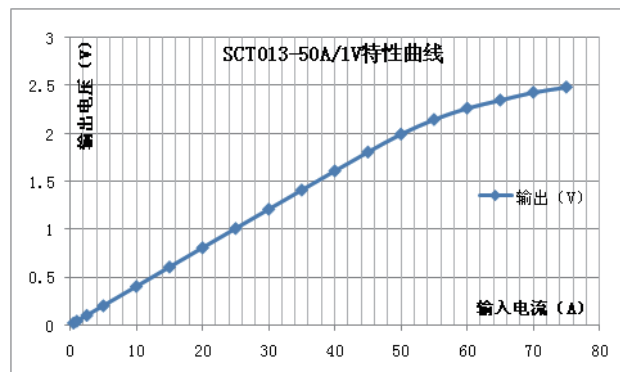
Opening size 13mmx13mm, Compatible to foreign products, leading wire 1 metre, standardΦ3.5 three core plug output, current & voltage two types of output. (Patent No. ZL 2015 3 0060067.X)



### Technical indicators:

Hanging installation, leading wire output  
 Fire resistance property: UL94-V0  
 Standard: GB1208-2006  
 Work temperature: -25°C ~ +70°C  
 Storage temperature: -30°C ~ +90°C  
 Work voltage: 660V  
 Frequency range: 50Hz-1KHz  
 Dielectric strength: 3.5KV 50Hz 1min

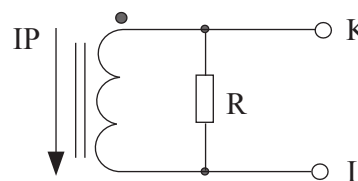
### Characteristic curve in different load volt-ampere:



### Electric parameter:

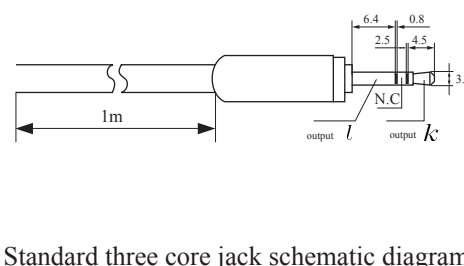
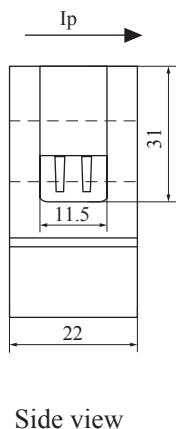
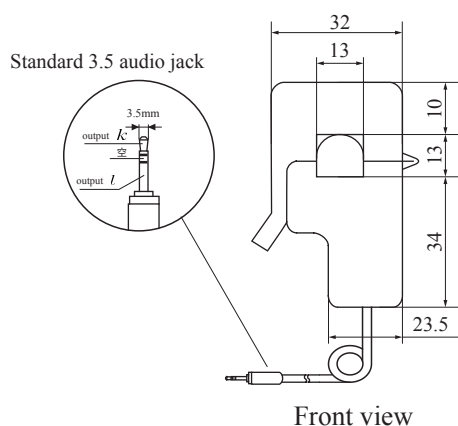
Rated input(rms)	50	A
Max.Input	70	A
Rated output	1	V
Turns ratio		
Accuracy	± 1	%
Linearity	≤ 0.2	%
Phase error		
max:Sampling resistance		Ω
Weight	50	g

### Wiring diagram:



Built-in with sampling resistance voltage output type

### Outline size diagram(in mm):



**Model: SCT-013**

**Rated input current: 5A/100A**

**Characteristics:** Opening size: 13mm\*13mm,  
 Non-linearity±3% (10%—120% of rated input current)  
 1m leading wire, standard Φ3.5 three core plug output.  
 Current output type and voltage output type (voltage output type built-in sampling resistor)

**Purpose:** Used for current measurement, monitor and protection for AC motor, lighting equipment, air compressor etc

**Core material:** ferrite

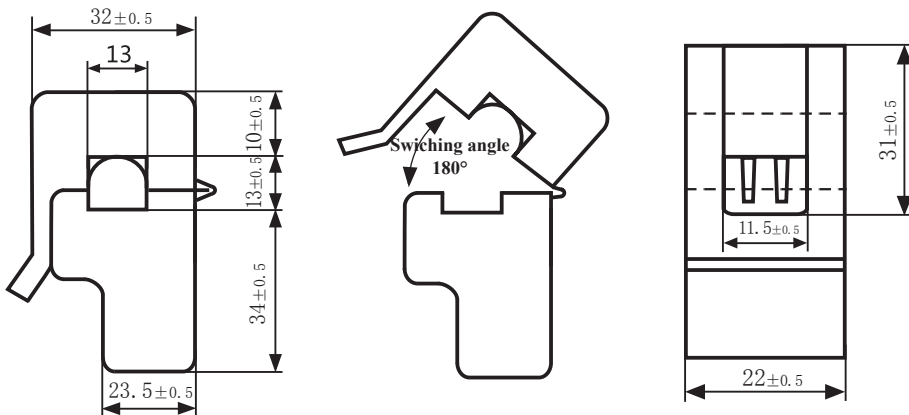
**Mechanical strength:** the number of switching is not less than 1000 times(test at 25°C)

**Safety index:** Dielectric strength(between shell and output)1000V AC/1min

**Fire resistance property:** In accordance with UL94-Vo

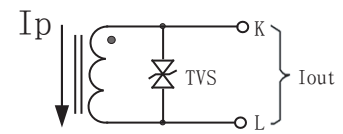
**Work temperature:** -25°C ~ +70°C

**Outline size diagram: (in mm)**

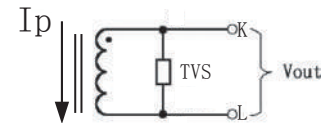


Front View

Side View



Current output type



Voltage output type

Schematic diagram

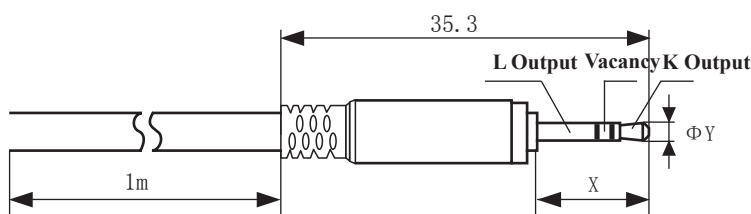


Diagram for standard three-core plug

Three-core plug size

	X	Y	
2.5mm Audio Plug	11.9	2.5	Optional
3.5mm Audio Plug	15.0	3.5	standard

Table of technical parameter:

Model	SCT-013-000	SCT-013-005	SCT-013-010	SCT-013-015	SCT-013-020
Input current	0-100A	0-5A	0-10A	0-15A	0-20A
Output type	0-50mA	0-1V	0-1V	0-1V	0-1V
Model	SCT-013-025	SCT-013-030	SCT-013-050	SCT-013-060	SCT-013-000V
Input current	0-25A	0-30A	0-50A	0-60A	0-100A
Output type	0-1V	0-1V	0-1V	0-1V	0-1V

※ Output type: voltage output type built-in sampling resistor, current output type built-in protective diode.