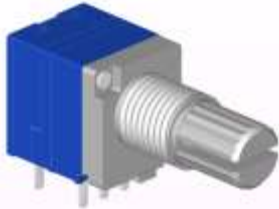


# 9mm Metal Shaft Rotary Potentiometer (9mm 金屬軸旋轉電位器)

**R097NS**



## Part Number

**R097NS - B 50K, L- 15 KQ/N=5**

Switch

開關

Taper  
線性

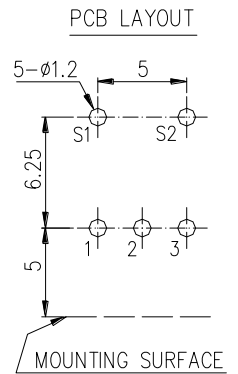
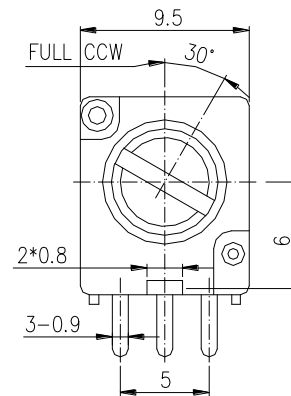
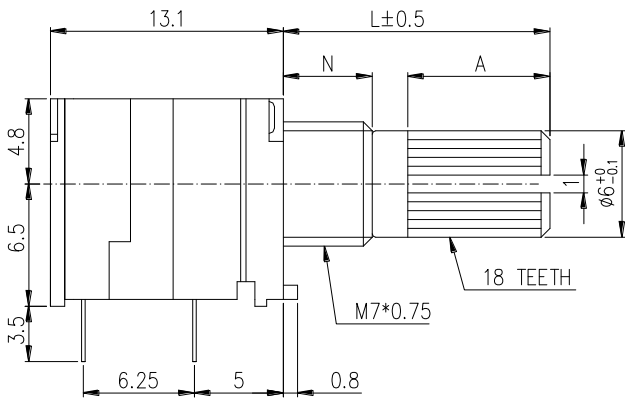
Shaft Length  
軸長

Bush Length  
軸套長

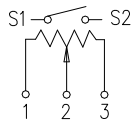
Resistance value  
阻值

Shaft Type  
軸型

## Dimensions 規格尺寸

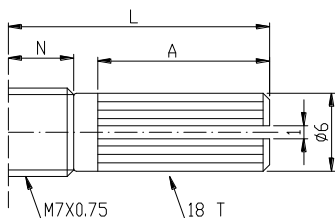


CIRCUIT



## Shaft Type 軸型

KQ Type



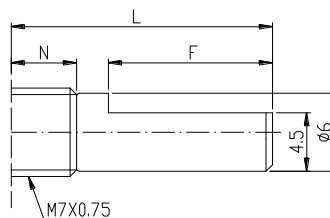
N=5mm

L	10KC	12.5KC	15KC	20KC
A	4	7	7	12

N=7mm

L	15KC	20KC	25KC
A	7	12	12

F Type



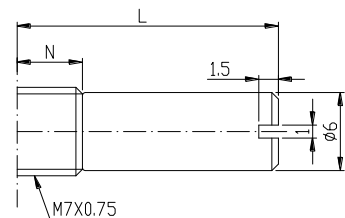
N=5mm

L	15F	20F
F	7	12

N=7mm

L	15F	20F	25F
F	7	12	12

RE Type



N=5mm

L	8RE	10RE	15RE
---	-----	------	------

N=7mm

L	15RE
---	------

## 9mm Metal Shaft Rotary Potentiometer (9mm 金屬軸旋轉電位器)

### General 一般事項

使用溫度範圍 Operating temperature	-10 °C ~ +70 °C
手工焊接 Manual soldering	300 °C Max 3sec

### Electrical Characteristics 電氣特性

總阻值(R) Total resistance	1KΩ ~ 500KΩ
總阻值容許誤差 Resistance tolerance	±20% (More Than 1MΩ ± 30%)
阻值線性 Resistance taper	A B C W
摺動雜音 Sliding noise	Less than 68 mV
殘留阻值 Residual resistance	≤ 20 Ω
開關接觸阻值 Switch contact resistance	0.05 Ω
絕緣阻抗 Insulation resistance	More than 100MΩ at DC 250V
定格電力 Rated power(W)	0.05W
開關定格電力 Switch rated power	DC 16V. 1A
最高使用電壓 Max. Operating voltage	50V AC
耐電壓 Withstand voltage	1 Minute at AC 300 V

### Mechanical Characteristics 機械特性

全回轉角度 Total rotational angle	300° ± 5°
開關角度 Switch angle	≤ 50°
全回轉扭力 Rotational torque	20 ~ 250 gf.cm
開關扭力 Switch action	400 gf.cm
全回轉止強度 Rotational stopper strength	4Kgf.cm Min
軸推拉強度 Shaft push-pull strength	10Kgf. Max
迴轉壽命 Rotational life	10,000 Cycles. (開關壽命 Switch life: 10,000 Cycles)